



The Charolais Pavilion,
Avenue M,
Stoneleigh Park, Kenilworth,
Warwickshire, CV8 2RG
t: 024 76 697731
f: 024 76 697776
www.rugbyfarmersmart.com
Holding No. 43-139-8013

Office Hours: Monday to Friday – 9.00am to 5.00pm
Opening Time: Gates open at 5.30am until further notice

Market Reports For Monday 16th December 2019

Market At A Glance



Prime Steers to 205p/kg & £1472
Prime Heifers to 243p/kg & £1395
Prime Bulls to 156p/kg & £1008
OTM Cattle 134p/kg & £1198
Prime Lamb SQQ 211p/kg (1879)
Prime Lambs to 269p/kg & £130
Ewes to £162 (839 Avg £72)
Store Lambs to £80.50
Store Cattle to £1075



**Friday 20th December
Christmas Poultry Sale 6pm**

!We will be closed on Monday 23rd December!

Catalogues & Entry Forms available by post, email or on the website
www.rugbyfarmersmart.com ~ admin@rugbyfarmersmart.com

CATTLE:128 Forward

In total on the day 128 Head of Cattle were presented for sale. 37 Prime Steers and Heifers, 4 Prime Bulls, 21 Cast Cows and 70 Store Cattle.

Prime Cattle

Top price per kilo and lead grossing heifer was 243p and realised £1395 for a stylish, sweet and fantastically proportioned Limousin Heifer consigned by Messers AJ Geary of Yew Tree Fm, Hanslope purchased by Ralph Pearson & Son of Bradford.

Top price per kilo was 205p for a well finished Limousin steer that realised £1230 consigned GR Fountain & Son purchased by Mr P Reid, Rugby.

Cast Cows and Stock Bulls -

Many more can be sold weekly, from the best limousin to the lean dairy cow and the biggest stock bulls. We Cater for all Cattle. Please call Andy to book in 07902 316268 Leading £ per head and p/kg

£1198 £1137 £1052 £1008 £998 £907 £905 £890 JV&SM Lea & Sons, £982 CW Reay & Son.

134p 128p 121p 120p 119p 115p JV&SM Lea & Sons, 131p CW Reay & Son, 113p EF Hemming

Trade in general on the day was buoyant, well fed, well fleshed cattle certainly do sell to a premium. We have over 15 end processors, butchers, abattoirs and 10 forward finishers purchasing cattle weekly. Numbers of cattle we are not feared off. Bring your cattle to Rugby Mart. For an on-farm inspection, a general chat or to book cattle in for sale please do contact Andy Armstrong on 07902 316268

Prime Cattle are in demand in Rugby Farmers Mart. Many more cattle can be sold to sellers advantage weekly. We look forward to seeing you soon.

Auctioneer: Andrew Armstrong

STEERS & BULLS:			
Top prices per head			
Charolais x	755kg	£1472	PC & RA Nichols & Son
Limousin x	600kg	£1230	GR Fountaine
Limousin x	660kg	£1201	R W Cross & Partners
Simmental	639kg	£1176	B Nichols
Limousin x	595kg	£1131	DTP & PA Walters
Top prices per kilo			
Limousin x	600kg	205ppk	GR Fountaine
Charolais x	755kg	195ppk	PC & RA Nichols
Limousin x	595kg	190ppk	DTP & PA Walters
Simmental	639kg	184ppk	B Nichols
Limousin x	660kg	182ppk	R W Cross & Partners

HEIFERS:			
Top prices per Head			
Limousin x	574kg	£1337	A J Geary
Charolais x	618kg	£1333	PC & RA Nichols
Simmental x	602kg	£1283	GR Fountaine
Limousin x	620kg	£1266	DTP & PA Walters
Limousin x	570kg	£1210	DTP & PA Walters
Top prices per Kilo			
Limousin x	574kg	243ppk	A J Geary
Charolais x	618kg	215ppk	PC & RA Nichols
Charolais x	537kg	206ppk	W & M Emery
Limousin x	570kg	205ppk	DTP & PA Walters
Limousin x	496kg	199ppk	M W Emery

**Please could all vendors book in stock, either by a quick call,
text or email Thank You!**

Office: 02476697731

Email: admin@rugbyfarmersmart.com

Tom: 07774723758

Just a quick note to thank you all for kind thoughts and interest in my ongoing illness. Tests are still on-going and hopefully I can update you in the near future. I look forward to seeing you in the new year. Wishing you a Happy Christmas and a Healthy 2020.

Craig Thompson

Next Calf Sale Monday 30th December
Good entry expected

Store Cattle 70 Forward.

A Fantastic Cattle trade was seen all the way through the sale. All vendors selling 100% of stock presented for sale, all vendors now head off into the Christmas break satisfied at the last store sale of 2019. We look forward to seeing you be it on farm, in the market or on the social scene in 2020.

Leading prices.

£1075x4 £660 JC Mclean, £995 £950x2 £935 £930 £820 J Blood & Sons, £965x4 ET Jackson & Sons, £860 Manor Farms Ptnrs, £845 £690x3 GR Clifton, £830 £800x3 £760 £690 £490x4 £480C Cummins & Son, £750 £735 £500D&GM Wright, £610x2 AA Day, £535x3 £500 Wolverton Farm Estate.

Auctioneer: Andrew Armstrong

F & J Clarke will kindly be donating a large Turkey at the evening Christmas Poultry Sale, Friday 20th December in Aid of Air Ambulance

SHEEP:3113

Prime Lambs: 1879 Forward SQQ 211p/kg

A smaller yarding as farmers struggle for finish and perhaps a little trepidation into the trade following woeful falls in trade on Thursday and the deadweight pulling 15p out of the bid, whilst Smithfield Meat Market complained of slow sales. Forget all that though today as Competition reigned supreme and our end user buyers broke their necks for Stock. An SQQ of 211p/kg absolutely on fire and a deadweight equivalent of over 450p/kg today!! (good job there bid price is a very honest reflection of demand hey).

A yarding of two halves with some lambs today well fed but lacking any grade but likewise about 15% of the yarding some very well bred Stock that was richly rewarded by two separate European Accounts. In the Euro section today a top of 269p/kg for Beltex at 36kg from S Oakes, Derbyshire ahead of R Richins at 40kg and 268p/kg with Pete the Champion Batchelor showing wonderful pens of Beltex lambs at 262p/kg at 45kg. Today 180 lambs trading over 220p/kg. In the heavies a top for quality of 263p/kg at 49.5kg from Pete again. Last lamb sold on the day 47kg from G L Woodard, Banbury at 240p/kg whilst all the weight here taking trade when P Batchelor saw 56kg at 225p/kg. The Gross columns today sending producers home very happy with Stan Colinswood for example showing 156 lambs to avg 47.5kg with a gross avg of £93.46p!! In the Euro a top gross of £118 at 45kg from Pete Batchelor with 44.5kg from G Woodard to £107.50 and 40kg from R Richins £107. Today 222 lambs grossing over £100. Top overall £130 at 49.5kg from Pete Batchelor whilst 56kg from the same stable £126 x 2 pens and Angela Tarry-Smith £121 at 58kg.

Trade throughout and totally unforecast by all, from Abattoir owners to little old Auctioneers.

Auctioneer: Tom Wrench

Prime Lambs : under 45.5kg SQQ 211p/kg			
Per Kilo			
Beltex x	36.00kg	269ppk	S Oakes & Son
Beltex x	40.00kg	268ppk	R Richins
Beltex x	45.00kg	262ppk	P Batchelor
Charollais x	41.00kg	254ppk	N H Barratt & Partners
Charollais x	39.50kg	251ppk	P F Edwards

Per HEAD			
Beltex x	45.00kg	£118.00	P Batchelor
Texel x	44.50kg	£107.50	G L Woodward
Beltex x	40.00kg	£107.00	R Richins
Texel x	45.00kg	£105.00	G L Woodward
Charollais x	43.50kg	£104.00	N H Barratt & Partners

Prime Lambs: OVER 45.5kg			
Per kilo			
Beltex x	49.50kg	263ppk	P Batchelor
Texel x	47.00kg	240ppk	G L Woodward
Beltex x	56.00kg	225ppk	P Batchelor
Texel x	46.50kg	224ppk	Park End Farming
Beltex x	57.00kg	221ppk	P Batchelor

Per HEAD			
Blue Texel	49.50kg	£130.00	P Batchelor
Charollais x	56.00kg	£126.00	P Batchelor
Charollais x	57.00kg	£126.00	P Batchelor
Texel x	58.00kg	£121.00	A Tarry-Smith
Texel x	47.00kg	£113.00	G L Woodward

Store Lambs: 395 Forward

A mixed show of stores today with just about every base covered. Top of the pops saw Charollais x from RF Davy to £80.50, with Ram lambs to £80 from MM Clarke & Sons. The best end dearer still today, seeing big lambs actively £75-£80 with very few of these forward. The best end of the mid term sorts all up round that £70 mark, with the lambs trading between £60 & £65 looking perhaps £4 per head dearer than last week. Very very few lambs today sold under £50.

I would like to thank the continued support through the store section this year.

Auctioneer: Martin Lloyd

Cull Ewes: 839 Forward

Only 839 Ewes forward today as Vendors wait for the Scanners verdict before drawing too hard. Trade very strong and heavy Ewes coming to the money in time for Christmas. Best End Ewes rarely seen in the Midlands Markets out in force today and just exactly what they all want. Top today for Messrs Leadbeater, Banbury seeing Texels to £162 ahead of Stuart Gowling, Swinford at £158 with Messrs Leadbeater matching £158 for two further pens. Long distance travellers from Duxford saw Fordwell Farm Park sell to £152 and £148. Trade in general strong and meated Ewes wanted throughout. Top Suffolks to £99 from Messrs Coley and Gowling. Wiltshire Horns to £95 from Ian Wain and Mules on fire throughout selling to £95 from Messrs Taylor with the majority of meated Mules £75 to £80.

Trade throughout and Your custom this year appreciated. Together we will go on next year to expand again to create one of the Country's leading Livestock Markets. Merry Christmas.

Auctioneer: Tom Wrench

Texel x	£162	DJ & BJ Leadbeater	Texel x	£148	Fordwell Farm Partners
Texel x	£158	GJ & SL Gowling	Texel x	£140	DJ & BJ Leadbeater
Texel x	£158	DJ & BJ Leadbeater	Texel x	£137	Fordwell Farm Partners
Texel x	£158	DJ & BJ Leadbeater	Texel x	£136	DJ & BJ Leadbeater
Texel x	£152	Fordwell Farm Partners	Texel x	£132	A Beaumont

THIS FRIDAY



Rugby Farmers Mart Ltd



**Evening Sale
Of
Christmas
Poultry**



Friday, 20th December 2019

Sale to commence at 6.00pm

Following the market carol service held at 5.30pm



TURKEYS • COCKERELS • GEESE • DUCKS



Dressed & Long Legged

(DEAD BIRDS ONLY)



Cash Only 5% Buyers Premium

Plucked and oven ready birds available of all weights and sizes.

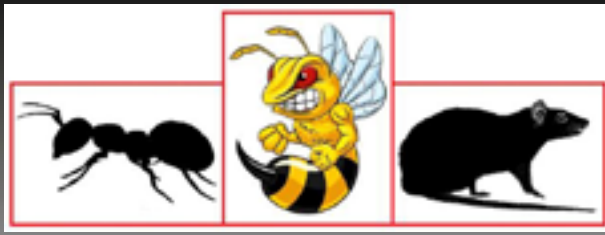
Come and buy a fresh bird for Christmas day
and enjoy the auction atmosphere whilst grabbing a bargain!
To be sold by auction at the on-site Cattle Market all indoors and under one roof.
Poultry from local and national producers.

The Charolais Pavilion, Avenue M, Stoneleigh Park, Kenilworth, Warwickshire, CV8 2RG

Tel: 02476 697731

Email: admin@rugbyfarmersmart.com Web: www.rugbyfarmersmart.com





RDB Pest Control

Reliable | Trustworthy | Fast | Effective
Competitive Prices

Ryan Brunt

07922 091 459

rdbpestcontrol@outlook.com

Why You Should Choose Us

- ✓ Cater for Red Tractor and Farm Assurance Schemes
- ✓ Wide ranging experience on Farms with existing agricultural customers
- ✓ Member of Warwickshire Young Farmers
- ✓ Fully qualified - Level 2 RSPH in Pest Control
- ✓ Trustworthy and security vetted
- ✓ Prompt, reliable fast response

A selection of sites where I have experience:

Police Sites • Local Airport • Farms • Warehouses • Offices
• Industrial Estates • Food Premises • Private Houses
Country Estates • Building Sites • Local Councils • Schools •
Day Nurseries • Care Homes

HARRIS & CLARKE
CHARTERED ACCOUNTANTS

...Specialising In Agriculture...

**Our team of staff has many years of
experience in dealing with the accountancy
and taxation affairs of farmers, landowners
and agricultural contractors**

**For further information or a free no
obligation meeting please contact**

John Harris

7 Billing Road, Northampton, NN1 5AN
Telephone 01604 622274
www.harrisandclarke.co.uk



**FINISHING CATTLE?
GROWING CATTLE?**

FEEDING SHEEP?

DO YOU WANT

HIGH PERFORMANCE

COST EFFECTIVE

FULLY ASSURED

AND

COMPLETE FEEDS?

THEN CONTACT

BERRYSTOCK FEEDS

TEL: 01788 890320

E-MAIL: john@berryfieldsfarm.co.uk

www.berrystockfeeds.co.uk

**BERRYFIELDS FARM
DAVENTRY
NN11 8NP**

FOR SALE

Chocolate Labrador Puppies
KC Registered, Inoculated
Call John 07933519031

**Agricultural Services available including Muck Spreading,
Ploughing, Cultivation and much more!**

Call Will for more info: 07795632527
Always Happy To Help!

Sheep Grazing Wanted

Please contact Stuart Wise 07880742082 or Lesley 07564645504

[Call Tom on 07807 693858, 01926 814731](tel:07807693858)
[or email to tom.reeve@aol.co.uk](mailto:tom.reeve@aol.co.uk)

Tom Reeve Contracting



Domestic, Agricultural and Commercial fencing.

Hedge coppicing, laying and planting.

Slot seeding for grass, arable, HLS and Game cover.

Slitting, Flail topping and much more.



For Sale

Beltex Shearling Ewe, possibly in lamb to Texel
Call Roy 07572003088



AUTO GATES LTD

Bridge Farm, Holt Lane, Ashby Magna, LE17 5NJ

Trevor 07498993897/01455 202791

Email: tjautogate@gmail.com

Fitted to new or existing gates, wood or steel automated.

Sliding, swinging or cantilever.

George Fell Services

Fencing & Hedge Trimming

Call 07769595856

For Sale

Good round bale haylage

Call Jane 07754488292

Wanted

Full-time worker required for sheep and cattle farm also some tractor work.

Good rate of pay for a reliable, experienced person.

Stratford Upon Avon area.

Call Steve on 07771560251

Hedge Cutting Contracting Service

Call Tom Lambert on 07824489716

For Sale

2 Pedigree Aberdeen Angus Stock Bulls

only selling as back on daughters

Call 07774723758

Wanted

Sheep & Cattle Grazing

Call 07760266701

Farm Insurance Specialists

Call 01865 844994

Visit www.county-insurance.co.uk



County
Insurance
Services

County Insurance Services, County House, Grove Court, Leamington Spa, Warwick, CV34 4JG. County Insurance Services is authorised and regulated by the Financial Conduct Authority, a FCA 507272.

JMT ENGINEERING REQUIRE CLASS 1 & 2 Lorry drivers.
Please ring Mark on 07970382951 or 01926 614345 for details"

T.A.R HIRE

- **FOR HIRE:**
- **10 & 14 TON REAR MUCK SPREADERS**
- **12 TON TRAILERS WITH SILAGE SIDES**
- **ROAD SWEEPER**
- **FLAT TRAILERS**
- **GRASS TOPPERS**
- **CONTRACT MUCK SPREADING SERVICES**

CONTACT:

DAVENTRY (ROB) - 07801791212

HINCKLEY (ALAN) - 07802951179



THE FARMING COMMUNITY NETWORK

The Farming Community Network is a voluntary network of volunteers, many of whom are members of the farming community.

We provide confidential pastoral and practical support for as long as needed to help people find a positive way forward through their problems.

FCN HELPLINE 03000 111 999

e-helpline;chris@fcn.org.uk

CHAPLAIN TO RUGBY LIVESTOCK MARKET –

Revd. Barbara Clutton, 01788 810372 or 07808 137550,

I'm around in the market most Mondays if needed, or just ring me if it's easier – I'm here to help with any farming or family issues.

Copies of "Fit For Farming" – men's health booklet are available at the market – please do take a copy.

**Hy-line pullets point of lay available now brown egg layers.
Please contact Mark Martin on 07976 260 775 or 01788 565766**



WE COVER SMALL FARMS,
LARGE FARMS AND
EVERYTHING IN BETWEEN

**From sheep farmers to arable farmers.
Flower growers to poultry farmers.**

We're proud to insure over 70% of UK farms with our Farm Select insurance. But we want more farms to benefit from our great cover and local service. That's why we've introduced Farm Essentials insurance - designed to meet the needs of smaller farms.

As your local agency, we are close by and can provide expert advice and hands-on support when you need it.

Call **Coventry Office**
on **02476 444519**

NFU Mutual, 6 Eastwood Business Village,
Harry Weston Road, Binley Business Park,
Coventry, CV3 2UB



NFU Mutual
INSURANCE | PENSIONS | INVESTMENTS

Rugby Farmers Mart Ltd

Forthcoming Sales 2019

**Friday 20th December 6pm
Evening Christmas Poultry Sale**

WE ARE CLOSED MONDAY 23RD DECEMBER

Find us on Social Media



@rfm_ltd



Instagram

rugbyfarmersmartltd

Vendors who are wishing to sell stock please feel free to contact:

Tom Wrench - 07774 723758

Martin Lloyd - 07972 375351

Andrew Armstrong - 07902 316268

Steve Martin - 07960 085950

who will gladly make
A FREE ON FARM VISIT & VALUATION